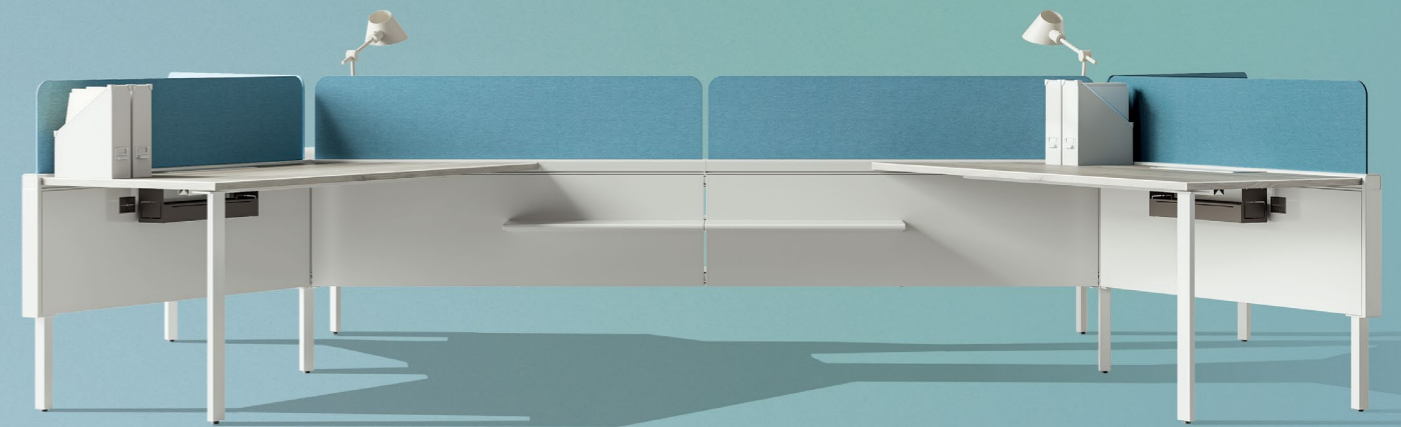


Sunón



Sunón

**European R&D Center**

Add: Brunnenstrasse 156, 10115 Berlin, Germany

**Sunon Mexico Manufacturing Base & Experience Center**

Add: Calle Palomas No. 201, Parque Industrial Hofusan, Salinas Victoria, Nuevo León CP 65500

**USA Headquarters & Experience Center**

Add: 311 N Green Street, Suite 900, Chicago IL 60607

**Singapore Branch & Experience Center**

Add: #01-02 R Building, 18 Robinson Road, Singapore 048547

**India Branch & Experience Center**

Add: Floor I & II, 643, Rd Number 36, Aditya Enclave, Venkatagiri, Jubilee Hills, Hyderabad, Telangana 500033, India

**Headquarters & Experience Center  
- Sunon Technological Innovation Park**

Add: No.1666 Zhixing Road, Xiaoshan District, Hangzhou, Zhejiang, China

     @sunonfurniture

us.sunonglobal.com

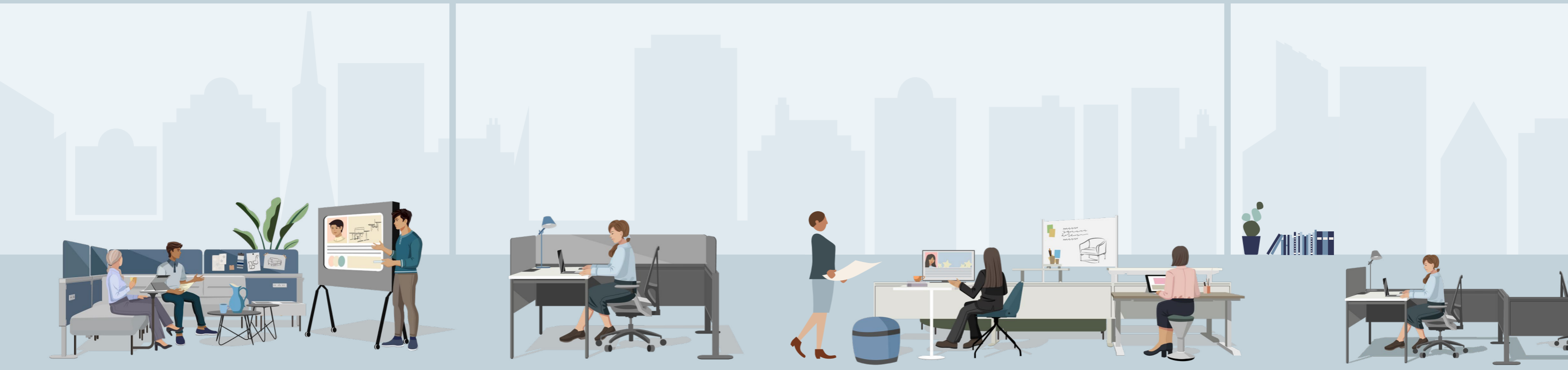
info.us@sunonglobal.com



VERDURE-X

Beyond the boundary, beyond the screen.

The era of mixed office will redefine the way of office working and brings about new expectations. Dimension-X was born from this, with a screen compatible with multiple office models of social communications, focused working and team work. The powerful power supply ability eliminates the communication distance between online and offline, walking in the forefront of the times and beyond the limitations of space.

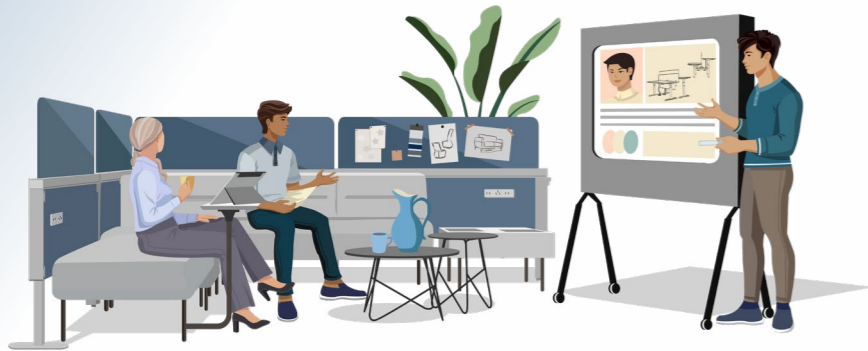


# Social

## PART 01

### Social office working space

Provide a social office space and create a vibrant community environment. Carry out deep communications with like-minded partners to awaken the resonance of the heart and promote the integration of individuals and groups.



The combination of screens and sofas cleverly separate the space and opens up a small world of leisure and relaxation in the open office area, allowing smooth communication of emotions and free stirring of the brainstorm.

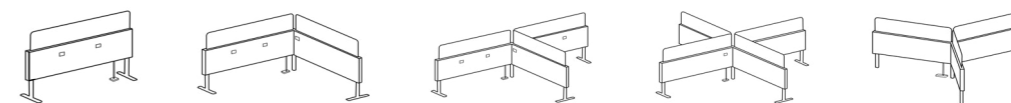




## Various combinations with lines managed neat and hidden

---

Five shapes of adapter columns connect the screen, and various combinations "play" the screens with dynamic patterns. The lines are shaped according to the situation and shuttled in the direction of the screen extension. A single line can be connected in a whole row in series, accommodating a maximum of lines of 12 workstations and providing continuous power support.



# Independent

## PART 02

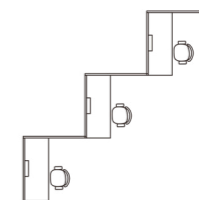
### Independent office working space

Quiet down, focus on the sedimentation of yourself and inwardly explore the construction of self-worth. The independent office areas are separated by screens. Find a quiet place in the noise and keep your mind clear in the chaos.





Re-layout the space with shapes and break through the stereotype. The ladder-like meandering layout makes the space more flexible and the staggered arrangement expands the personal area. The shaped spaces can also be easily coped with thus improving the space utilization.



"Slash" is a kind of workplace attitude. The creative slanting foot breaks through the conventional shape of straight up and down, symbolizing the "slash spirit" to break the cage of thinking, shattering the inherent label and redefining the office model.



### Not just another screen

The top of the Dimensional-X beam can be used to add a thin screen in addition to a variety of shelving accessories. The 120mm shelf height leaves a wide gap with no sanitary corners, nor does it occupy desktop space.

# Group

## PART 03

### Group office space

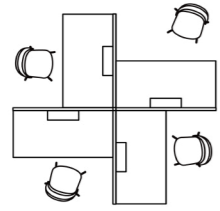
Step outside the enclosed screened space and exchanges ideas with the team for inspiration. Collaboration is the art of 1+1>2. It's also the secret of doubling the productivity.





**Small tabletops added at your will for more instant communication**

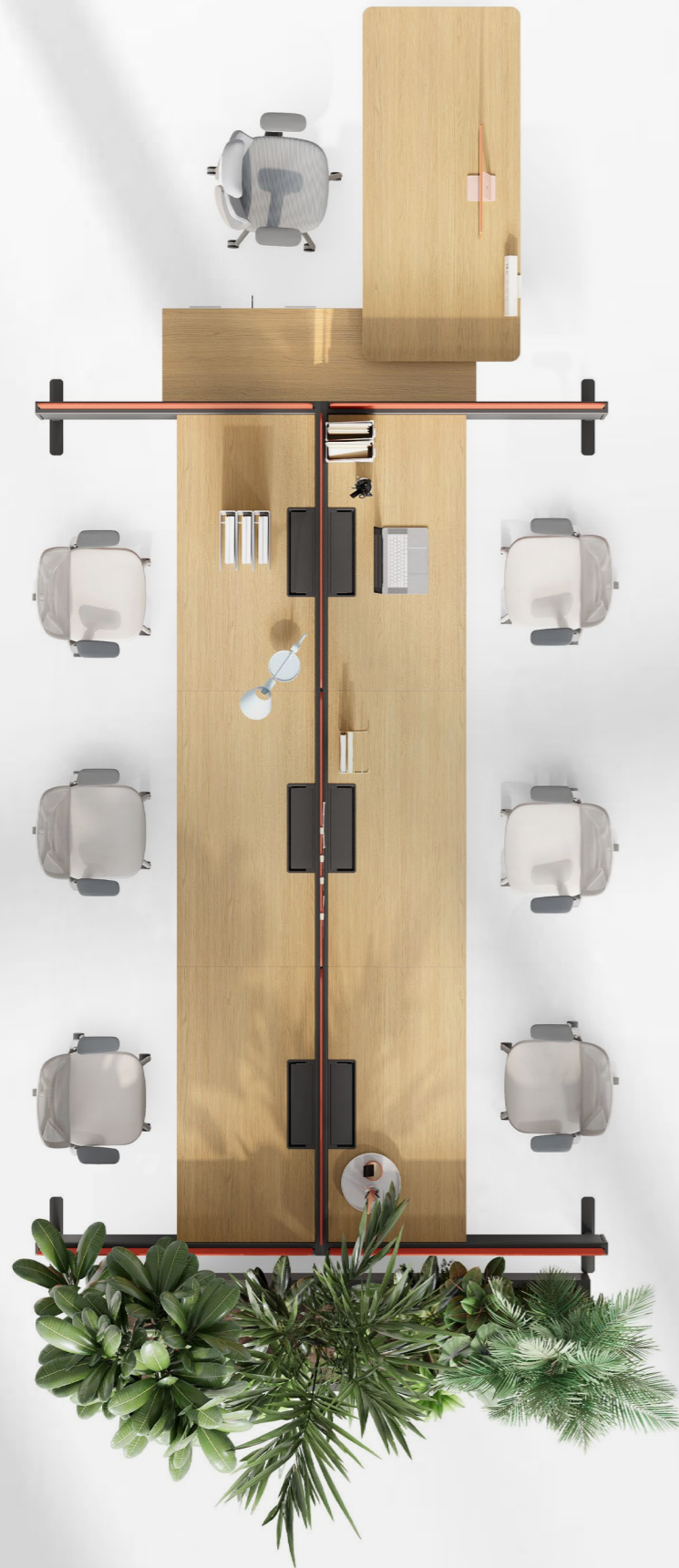
A small negotiation table in the middle of a team of four creates a handy conference room just around the corner. No need to find another space for communication among teams, and brainstorming during work is always at your disposal.



The cross-shaped screen unites the group and creates a space for each of them; the cross shape is like a meeting of ideas, releasing the creativity. The movable push cabinet is equipped with soft cushions and turned into a small mobile stool, making communication available at any time.



1+N cooperated working is divided with screens. The staff area is combined with other functional desks and the two parts are integrated with each other in this dual model. But the two parts are also independent at the same time with no interference to each other, making the teamwork a perfect cooperation.

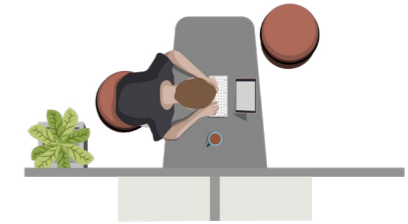


## Free to Create Unlimited Possibilities



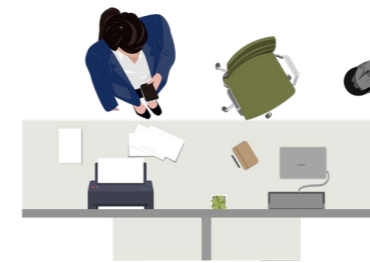
### ONE. As Supervisor's Area

Combined with the supervisor's desk, the area allows communications between the upper and lower levels smoother without barriers.



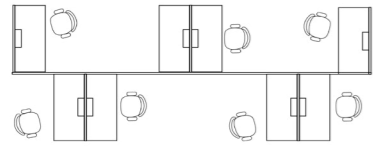
### TWO. As Discussion Area

Combined with the discussion table, the area provides a private corner for temporary office working and instant communications.



### THREE. As Shared Area

Combined with in-line desks, the area integrates the printer and other office supplies for orderly storage.



Focus and collaboration are not mutually exclusive. One-piece countertops without splicing eliminate the distance for immediate discussion, while additional tabletop screens are free from visual interference. Immersive work and instant communication are ongoing simultaneously.



# Flexible

## PART 04

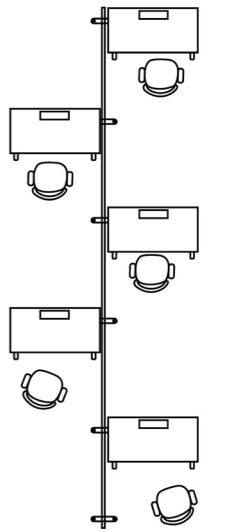
### Flexible office space

Freedom to dominate the office space and switch the work model at your will. One screen for two uses: separation and power usage. Flexible office respects for individual needs.





The form of vertical arrangement of desk and screen can maximize the individual office area, and the table top is arranged on left and right in turn. The desk is equipped with an integrated screen, so that the lines of sights do not cross and the office work is more focused. With the lift workplace, you can have a healthy office working model by alternating sitting and standing.





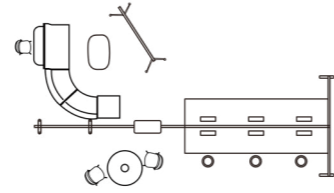
The on-screen socket with flexible power supply, providing a handy charging station at any time.

The wiring system for lifting workstation is well-organized. Electric wires are led into the screen with a soft cable managing tube, and then up the serpentine tube to the socket under the table, thus to achieve hidden alignments.



## Say Goodbye to Sameness Welcome A Diversified and Interesting Space

The regular square space is inevitably lacking flexibility. With Dimension-X as the axis, the layout of the space is integrated, which is visually more beautiful and interesting, and different working models can fit in this space.



**Flexible Combinations Featured by Versatility.**

The combination of screen and furniture has never been so flexible. Any combination in your mind can be achieved and all your functional needs can be met within the square inches.



*One*

The 90° tabletops is adjacent to the 270° lounge area, with focus and collaboration just one screen away.



*TWO*

Surrounding sofas with inspiration at once; standing against the coffee table, making efficacy of communications doubled.



*Three*

With the screen as the boundary, each exclusive side at the front, back, left and right help to make the office efficiency as top priority.



*FOUR*































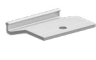
Separate desk connected to a small bar, achieving office and leisure a one-stop access.



*FIVE*

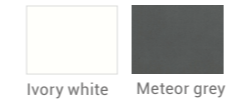
Leisure social area, two-person negotiation area, shared office area... all achieved through one screen for smooth connection.

Specification

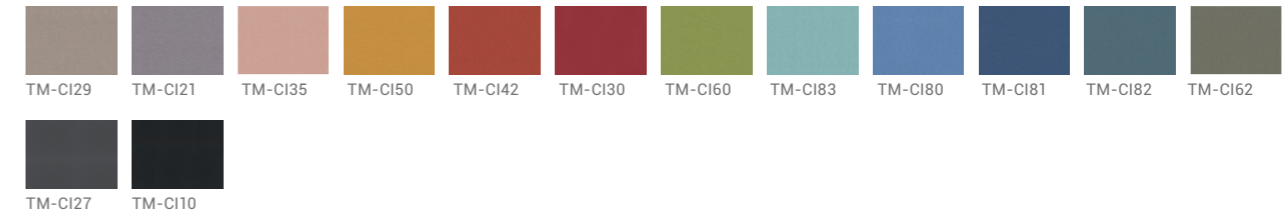
 PVDX66.KBD W48.66*D17.80*H2.60(in) W56.54*D17.80*H2.60(in) W64.41*D17.80*H2.60(in) W72.28*D17.80*H2.60(in)	 PVDX66.KBZ W47.96*D17.80*H2.60(in) W55.43*D17.80*H2.60(in) W63.70*D17.80*H2.60(in) W71.57*D17.80*H2.60(in)	 PVDX66.KBX W47.24*D17.80*H2.60(in) W55.12*D17.80*H2.60(in) W62.99*D17.80*H2.60(in) W70.87*D17.80*H2.60(in)	 PVDX66.MPM W23.62/27.56/31.50/35.43 /47.24/55.12/62.99/70.87 *D15.59*H0.47(in)	 PVDX66.MPG W23.62/27.56/31.50/35.43 /47.24/55.12/62.99/70.87 *D15.59*H0.47(in)
 PVDX66.ZII H15.75in	 PVDX66.ZLL H15.75in	 PVDX66.ZTT H15.75in	 PVDX66.ZX H15.75in	 PVDX66.ZYY H15.75in
 PVDX01.JD W11.93*D1.57*H1.57(in)	 PVDX02.JD W13.70*D3.15*H11.93(in)	 PVDX03.JD W13.70*D3.15*H11.93(in)	 PVDX04.JD W13.70*D10.12*H11.93(in)	 PVDX05.BZ W46.26/54.13/62.01/ 69.88*D27.56*H0.98(in)
 PVDX06.BZ W47.24/55.12/62.99/ 70.87*D27.56*H0.98(in)	 PVDX07L.BY W47.24*D27.56*H0.98(in) W55.12*D27.56*H0.98(in)	 PVDX07R.BY W47.24*D27.56*H0.98(in) W55.12*D27.56*H0.98(in)	 PVDX08.JD W10.19*D2.48*H28.54(in)	 PVDX09.JD W3.94*D2.99*H28.54(in)
 PVDX10.BZ W55.12/62.99/70.87 *D27.56*H0.98(in)	 PVDX11.BZ W47.24*D55.12*H0.98(in) W55.12*D55.12*H0.98(in) W62.99*D55.12*H0.98(in) W70.87*D55.12*H0.98(in)	 PVDX12.BQ W45.28*D30.99*H29.53(in)	 PVDX13.BQ W37.01*D24.41*H5.69(in)	 PVDX14.AS φ1.18*H15.75(in)
 PVDX15.AS W26.77*D9.84*H6.10(in)	 PVDX16.AS W26.77*D9.84*H12.80(in)	 PVDX18.AS W3.15*D2.09*H0.20(in)	 PVDGGJ(M) W23.62/27.56/31.50/35.43 /39.37/*D10.24*H1.57(in)	 PVDGGJ(G) W23.62/27.56/31.50/35.43 /39.37/*D10.24*H1.57(in)
 PVDGAZ W2.36*D2.20*H0.43(in)				

Material

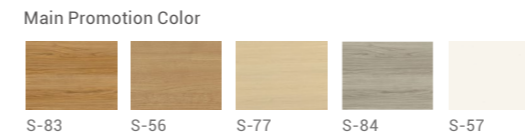
Screen frame/Steel sheet/Connection column



Upholstered screen



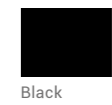
Desktop



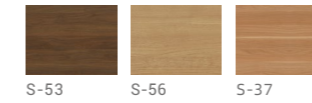
Slant feet/Upright feet/Fixed feet/  
Adjustable feet



Cable tube/Cable port



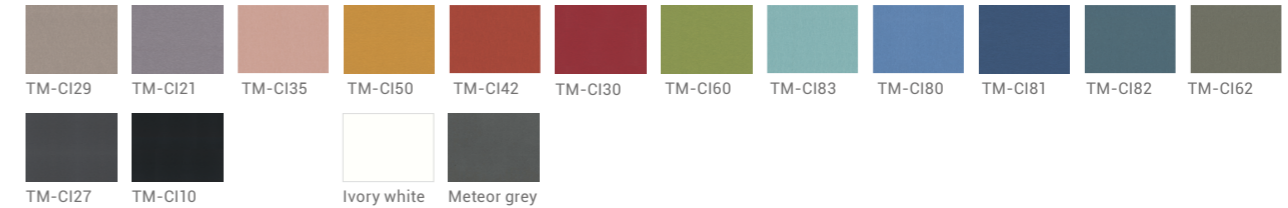
Optional Color



Storage box/Storage rack



Storage plate



Given that products may be updated constantly, no further notice will be given in regard of changes in specification, and the real product shall be considered as final.

