

Sunón

European R&D Center

Add: Brunnenstrasse 156, 10115 Berlin, Germany

Sunon Mexico Manufacturing Base & Experience Center

Add: Calle Palomas No. 201, Parque Industrial Hofusan, Salinas Victoria, Nuevo León CP 65500

USA Branch & Experience Center

Add: 525 Technology Drive Suite 150 Irvine, CA.92618

Singapore Branch & Experience Center

Add: #01-02 R Building, 18 Robinson Road, Singapore 048547

India Branch & Experience Center

Add: Floor I & II, 643, Rd Number 36, Aditya Enclave, Venkatagiri, Jubilee Hills, Hyderabad, Telangana 500033, India

Headquarters & Experience Center
- Sunon Technological Innovation Park

Add: No.1666 Zhixing Road, Xiaoshan District, Hangzhou, Zhejiang, China



Sunón



SAMU



Like a shining star to the sky, a treasure to you !

Jumping out of the ocean, the whale, with its dynamic silhouette, is the muse to its design team--Favaretto & Partner, a renowned Italian design studio. With whale as its prototype, SAMU adds a natural flair to modern office. This creative design has also captured the American Good Design Award 2018, the silver award at Italian A'Design Award & Competition 2018, and the Germany iF Design Award 2019, bravo!



Winner of
iF Design Award 2019



Winner of
American Good Design
Award 2018

A cute "Whale" makes an adorable space

With its cute look and refreshing color, SAMU injects new vitality to discussions and talks, breaking through the dull atmosphere in office.



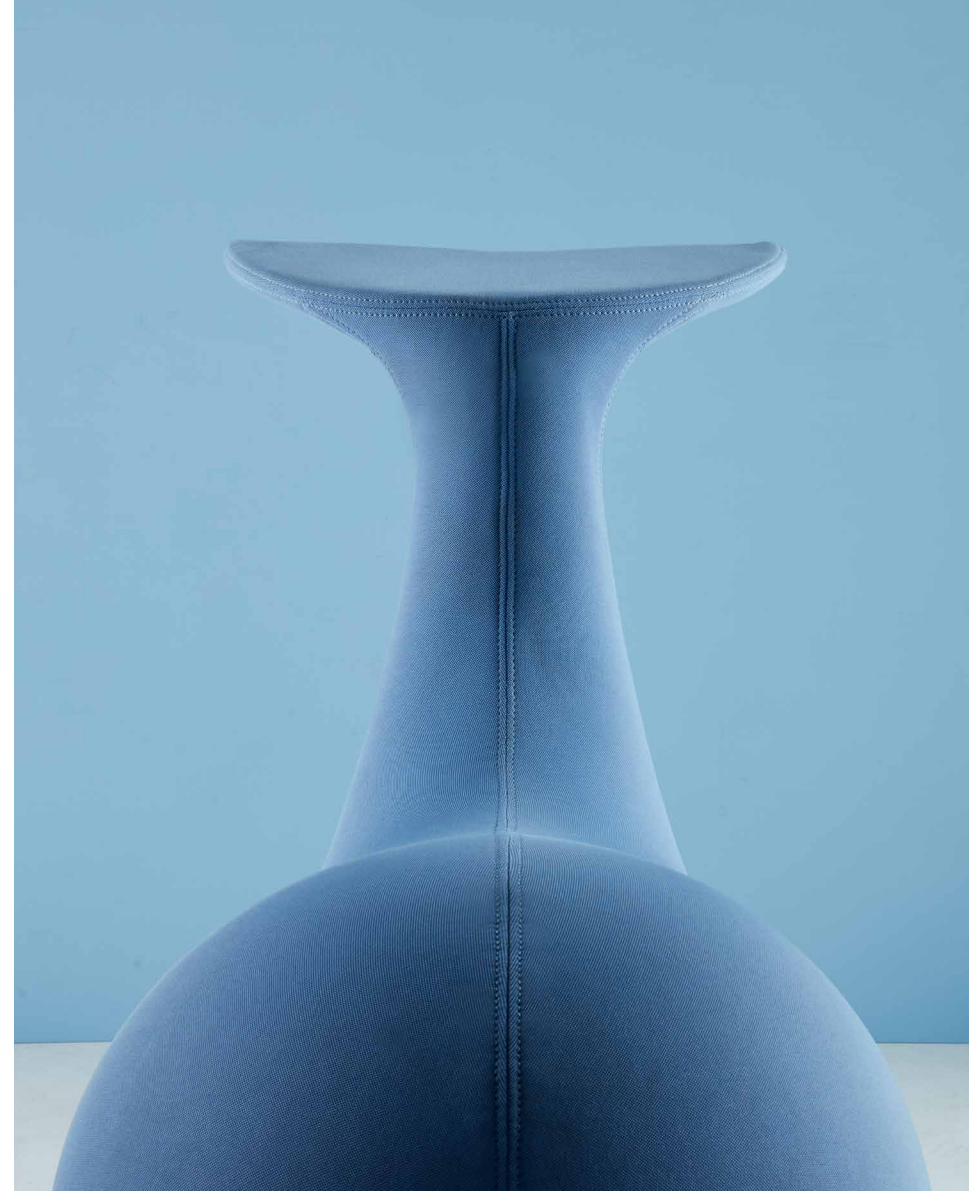
Abstract texture

The design of side pocket imitates the skin texture of whale's lower jaw, sketching its contour while creating a vivid figure. The special fabric splitting technique paired with manual stitching guarantees a perfect fit between the fabric and the curved surface.

Sleek lines

The lines are as smooth as drifting cloud and flowing water. The framework, supported by metal and steel frame, is filled with one-piece moulded foam. The tail design in mechanical equilibrium, delivers the sense of dynamics and enjoyment.





Tail, shine in style and excel in function

Sophisticated details make an effortless look. The whale tail, acting as a shelf, guarantees SAMU's balance. With the strong support, you could use a laptop, write notes or read comics on it.



Storage, never too much

The ocean is vast for it refuses no rivers, while SAMU, with its pocket design, refuses nothing you could put in, be it a pencil, magazine or tablet, even a brilliant sudden idea!





Handle, a considerate detail

A commitment to detail is evident in many small things. The handle on the tail is designed for the convenience of moving SAMU. Being a thoughtfully designed "fish", SAMU is exclusive for you.

Available in various colors

Say no to monotony and rigidities!
We are young;
we refuse to be defined;
we want our office to be different!



Great resistance to stains

SAMU adopts American nanotechnology fabric, which has passed strict tests on water-proof, antifouling, and grease-proof functionality. With this new fabric, coffee stains, juice, or oil stains can be easily removed with a mere wipe.



Joy

Being young and energetic,
we do not like being restrained,
neither do we need rigid rules.
Don't tell me how to sit,
we sit in whatever way we love.





SAMU fun for you

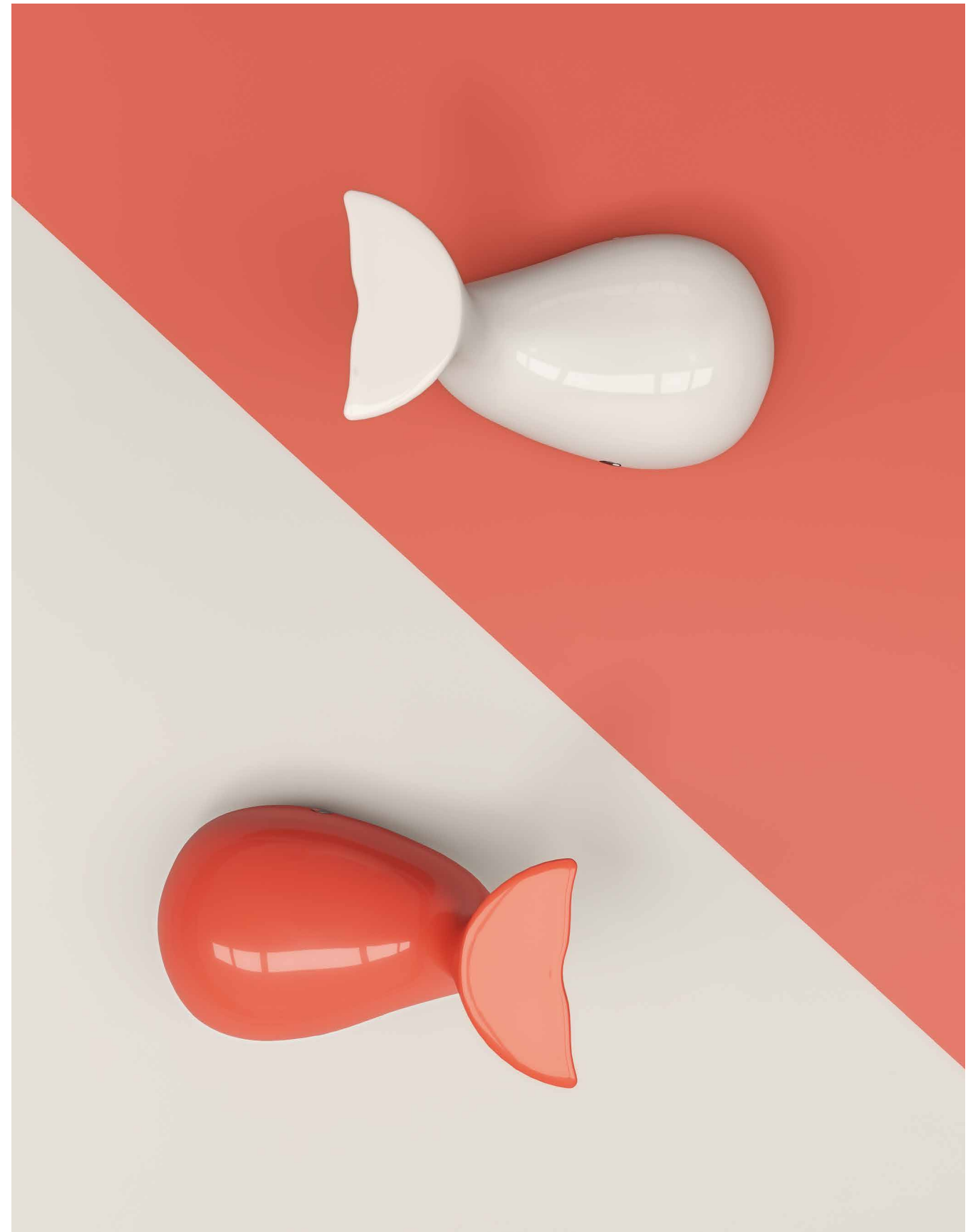
It is always nicer to have company when bathing in the sunlight. With orange, blue, white, and green colors, SAMU represents youth and vitality and will accompany you on the trip to better working and living.





SAMU way of smooth

Hug me, and I am smoother than you can imagine, just like a shelled litchi. The whole piece is made of FRP (fiber reinforce plastic) through injection moulding, endowing me with high strength and relatively light weight. Fine and smooth surface allows strong resistance to fouling and corrosion. For leisure and entertainment, in the living room or offices, SAMU always surprises you.





Product Specifications



SS30.1.MR
W19.69*D33.46*H30.71(inch)

SS31.1.MR
W19.69*D21.65*H16.54(inch)

SS30.1.YR
W19.69*D33.46*H30.71(inch)

SS31.1.YR
W19.69*D21.65*H16.54(inch)

SS34.1.MR
W18.11*D31.5*H28.35*H14.96(inch)



SS33.1.FRP
W16.73*D29.53*H25.79(inch)

SS33.1.FRP
W16.73*D29.53*H25.79(inch)

SS33.1.FRP
W16.73*D29.53*H25.79(inch)

SS33.1.FRP
W16.73*D29.53*H25.79(inch)

SS30 / SS31 / SS34 Product Material

SS30/SS31
Main body



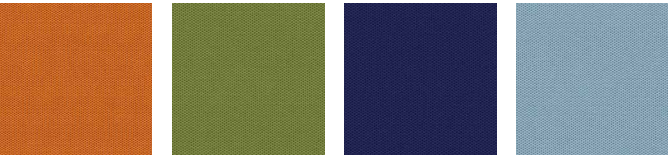
SM-ML40B SM-ML50B SM-ML60B SM-ML81B SM-ML82B

SS30/SS31
Part



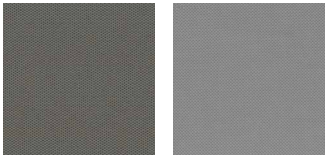
SM-ML21B

SS30/SS31/SS34
Main body



TM-LE40 TM-LE60 TM-LE81 TM-LE83

SS30/SS31/SS34
Part



TM-LE22
SS30/SS31 TM-LE21
SS34

SS33 Product Material



Morandi green Grayish white Coral Silence blue

Given that products may be updated constantly, no further notice will be given in regard of changes in specification, and the real product shall be considered as final.