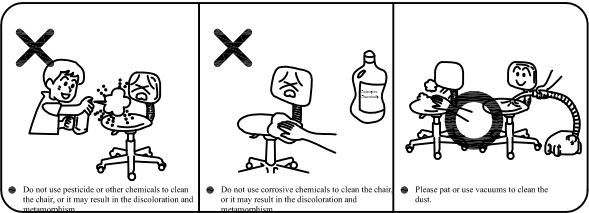
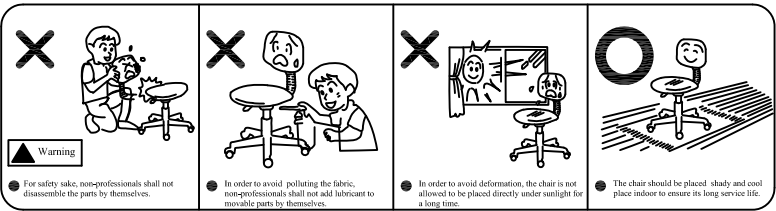


These are the instructions for product use. Please read and follow the guidance of the instructions for proper use and maintenance of your furniture so as to maintain their sound condition after many years of use. Dos and don'ts in furniture use:

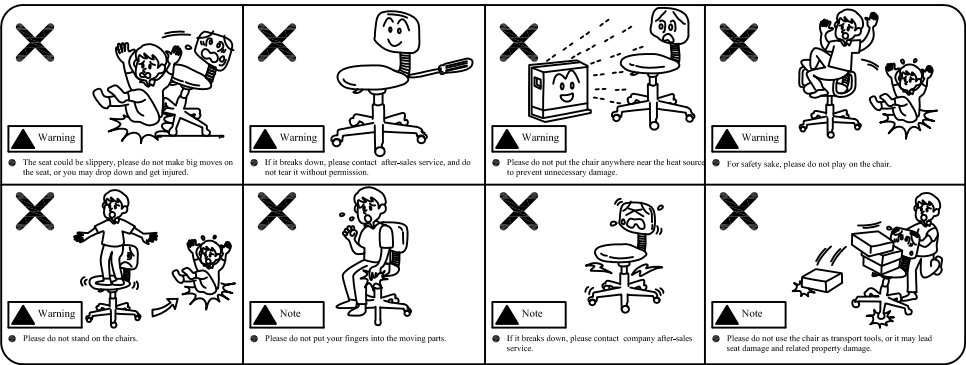
Dos and Don'ts in Material Clean



Dos and Don'ts in Use



Safety Precautions

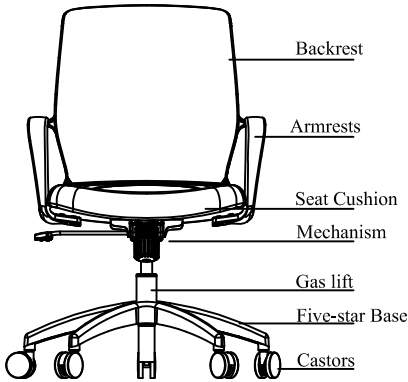


Assembly Instruction

- Please decide the location of your furniture before installation to avoid moving them in a large scale after it is completely installed.
- Do not place your furniture in dark and damp or hot and dry environment.
- Please check the number of packaging bags, view the product installation manual and verify the product structure.
- Please check the direction of each part when unpacking them before installation.
- Please install the product patiently. Make sure that each part is in the right position. Furniture is easy to assemble, but it takes patience and carefulness to do a meticulous job.
- Please check the stability of the furniture after installation. Shake your furniture gently to confirm whether it is level with the ground or whether the screw is tight.
- Please keep the furniture unoccupied for a period of time. Open the cabinet and drawer to release residual painting odor.



Thank you for choosing Sunon products.
Please read the instruction carefully
before using.



Instruction for Use

Product Information

Item No.: CDP60TW CDP61TW
Product Name: Office Chair
Dimension: 575W*575D*865H
Seat Height: 430mm
Material: High-quality Wood, Electroplated Chrome Alloy/Steel Cube/Painted Wood, High-density Moulded Foam/Cutted Foam.
Standard: QB/T2280-2016 Office Furniture Office Chair

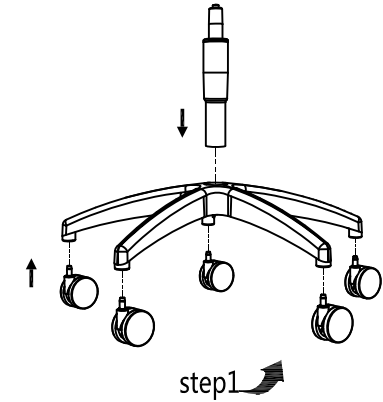
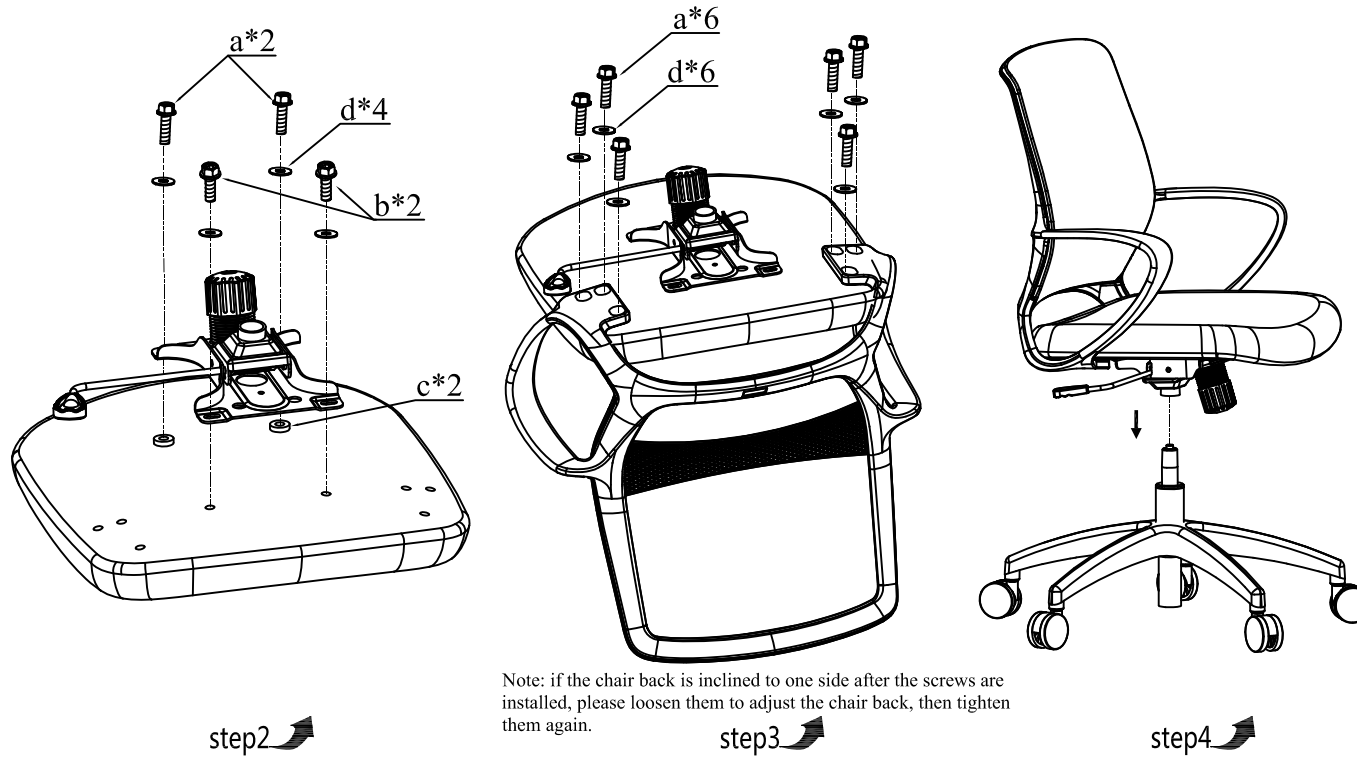
The product is suitable for office and decoration purpose; please use this product indoor.
If your product has been updated, please leave the old version to the qualified recycling company or enterprises involved in recycling business.

Zhejiang Sunon Furniture Manufacture Co., Ltd

Customer Service Hotline: 4008-600-666
Website: www.sunon-china.com
Headquarters Address: Sunon Central Business Building, No. 200 Citizen Street, Qianjiang CBD, Hangzhou, Zhejiang
Manufacturing Base Address: 35th, Ningdong Road, Xiaoshan Economic and Technological Development Zone, Hangzhou, Zhejiang
Manufacturing Base Address: 6th Anren Road, Jianshan Haining Economic Development Zone, Zhejiang

Materials

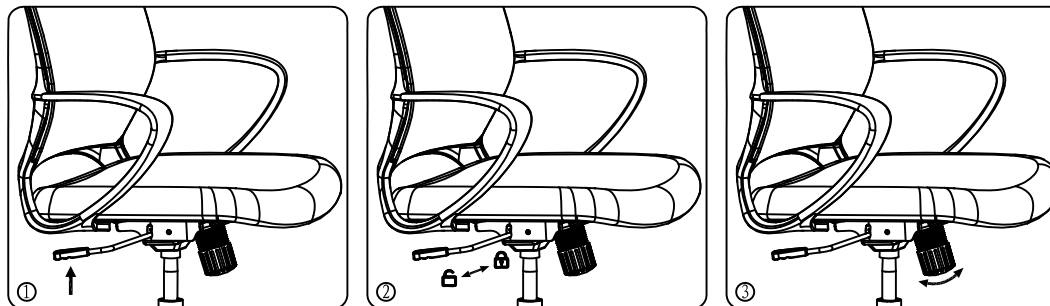
Material	Leather	High quality leather with good performance of glossiness, permeability and toughness.
	PU/Artificial Leather	High quality material with various colors available for choice.
	Fabric	Fire-proof and antifouling fabric of high quality.
Filler	High-density Foam	Comfortable and elastic.
Fittings	Plywood board	High quality poplar wood.
	Mechanism	Have passed American ANSI/BIFMA X5.1-2017 test
	Gas lift	Have passed American ANSI/BIFMA X5.1-2017 test
	Five-star Base	
	Castors	
	Armrests	



Fittings

a	b	c	d	e
Screw 1/4"*1" 8PCS	Screw 1/4"*3/4" 2PCS	Rubber washer 25*6mm 2PCS	Washer 16*6.5*1 10PCS	Wrench 5# 1PCS

Functional Specification



- Adjust Seat Height**
Upward: get up a little bit from the seat and pull the lever to lift the seat to an appropriate height.
Downward: press down and pull the lever to lower the seat to an appropriate height.
- Adjust and Lock Tilt Angle**
Pull out the lever to tilt the backrest at will, and push the handle inward to lock the backrest.
- Adjust Backrest Tilt Tension**
Rotate the knob under the seat to adjust the tilt tension of backrest according to your need.